

**TREX2 Antibody (C-term)**  
**Purified Rabbit Polyclonal Antibody (Pab)**  
**Catalog # AP21082a****Specification**

---

**TREX2 Antibody (C-term) - Product Information**

Application	WB,E
Primary Accession	<a href="#">Q9BQ50</a>
Reactivity	Human
Host	Rabbit
Clonality	Polyclonal
Isotype	Rabbit IgG
Calculated MW	25922

**TREX2 Antibody (C-term) - Additional Information****Gene ID** 11219**Other Names**

Three prime repair exonuclease 2, 3'-5' exonuclease TREX2, TREX2

**Target/Specificity**

This TREX2 antibody is generated from a rabbit immunized with a KLH conjugated synthetic peptide between 264-299 amino acids from the C-terminal region of human TREX2.

**Dilution**

WB~~1:1000

E~~Use at an assay dependent concentration.

**Format**

Purified polyclonal antibody supplied in PBS with 0.09% (W/V) sodium azide. This antibody is purified through a protein A column, followed by peptide affinity purification.

**Storage**

Maintain refrigerated at 2-8°C for up to 2 weeks. For long term storage store at -20°C in small aliquots to prevent freeze-thaw cycles.

**Precautions**

TREX2 Antibody (C-term) is for research use only and not for use in diagnostic or therapeutic procedures.

**TREX2 Antibody (C-term) - Protein Information****Name** TREX2

**Function** Exonuclease with a preference for double-stranded DNA with mismatched 3' termini. May play a role in DNA repair.

**Cellular Location**

Nucleus.

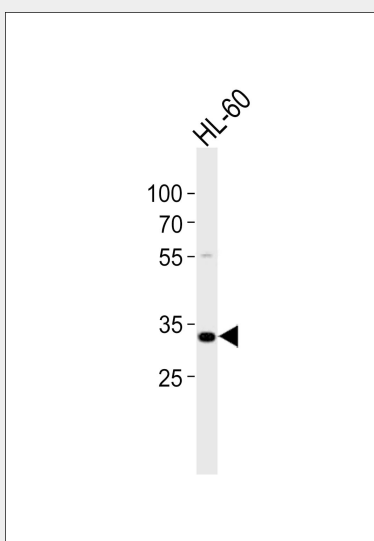
**Tissue Location**

Detected in heart, breast, prostate, skeletal muscle, testis, uterus, bone marrow, colon, small intestine, stomach and thymus.

**TREX2 Antibody (C-term) - Protocols**

Provided below are standard protocols that you may find useful for product applications.

- [Western Blot](#)
- [Blocking Peptides](#)
- [Dot Blot](#)
- [Immunohistochemistry](#)
- [Immunofluorescence](#)
- [Immunoprecipitation](#)
- [Flow Cytometry](#)
- [Cell Culture](#)

**TREX2 Antibody (C-term) - Images**

Western blot analysis of lysate from HL-60 cell line, using TREX2 Antibody (C-term)(Cat. #AP21082a). AP21082a was diluted at 1:1000. A goat anti-rabbit IgG H&L(HRP) at 1:10000 dilution was used as the secondary antibody. Lysate at 20ug.

**TREX2 Antibody (C-term) - Background**

Exonuclease with a preference for double-stranded DNA with mismatched 3' termini. May play a role in DNA repair.

**TREX2 Antibody (C-term) - References**

- Mazur D.J.,et al.J. Biol. Chem. 274:19655-19660(1999).  
Mazur D.J.,et al.J. Biol. Chem. 276:14718-14727(2001).  
Mazur D.J.,et al.J. Biol. Chem. 276:17022-17029(2001).  
Perrino F.W.,et al.J. Biol. Chem. 280:15212-15218(2005).

